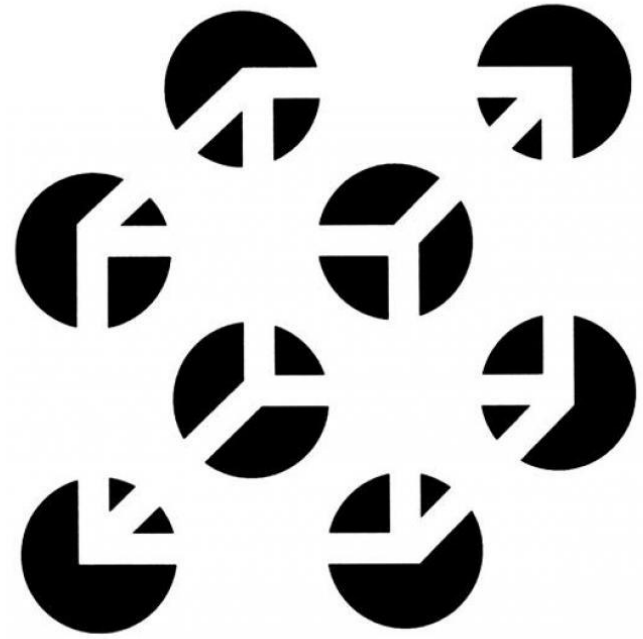
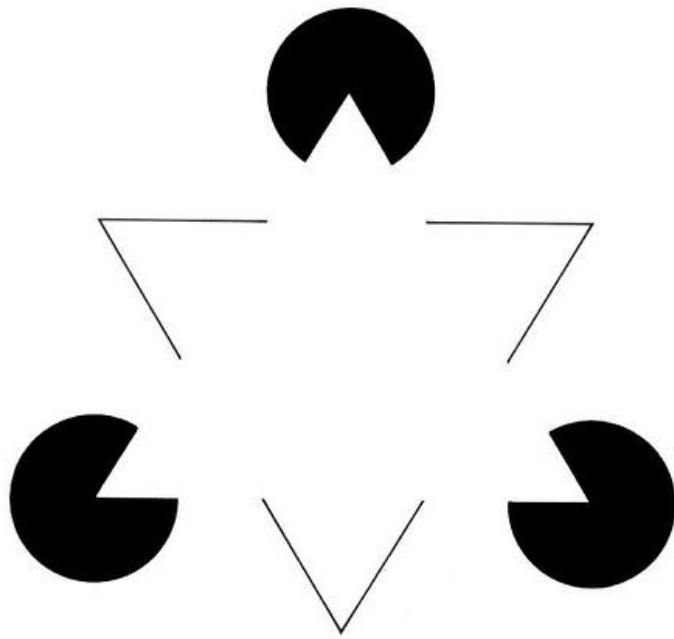


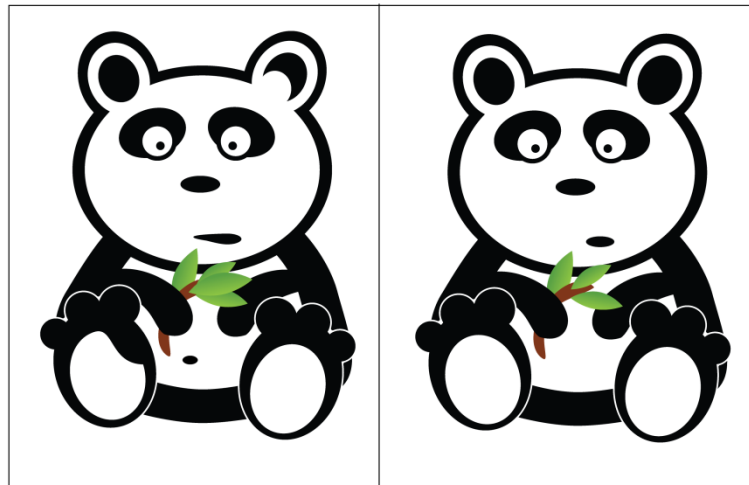
USE OF IT AND SOCIAL MEDIA FOR HEALTH PROFESSIONAL

CITIZEN SCIENCE





SPOT THE FIVE DIFFERENCES





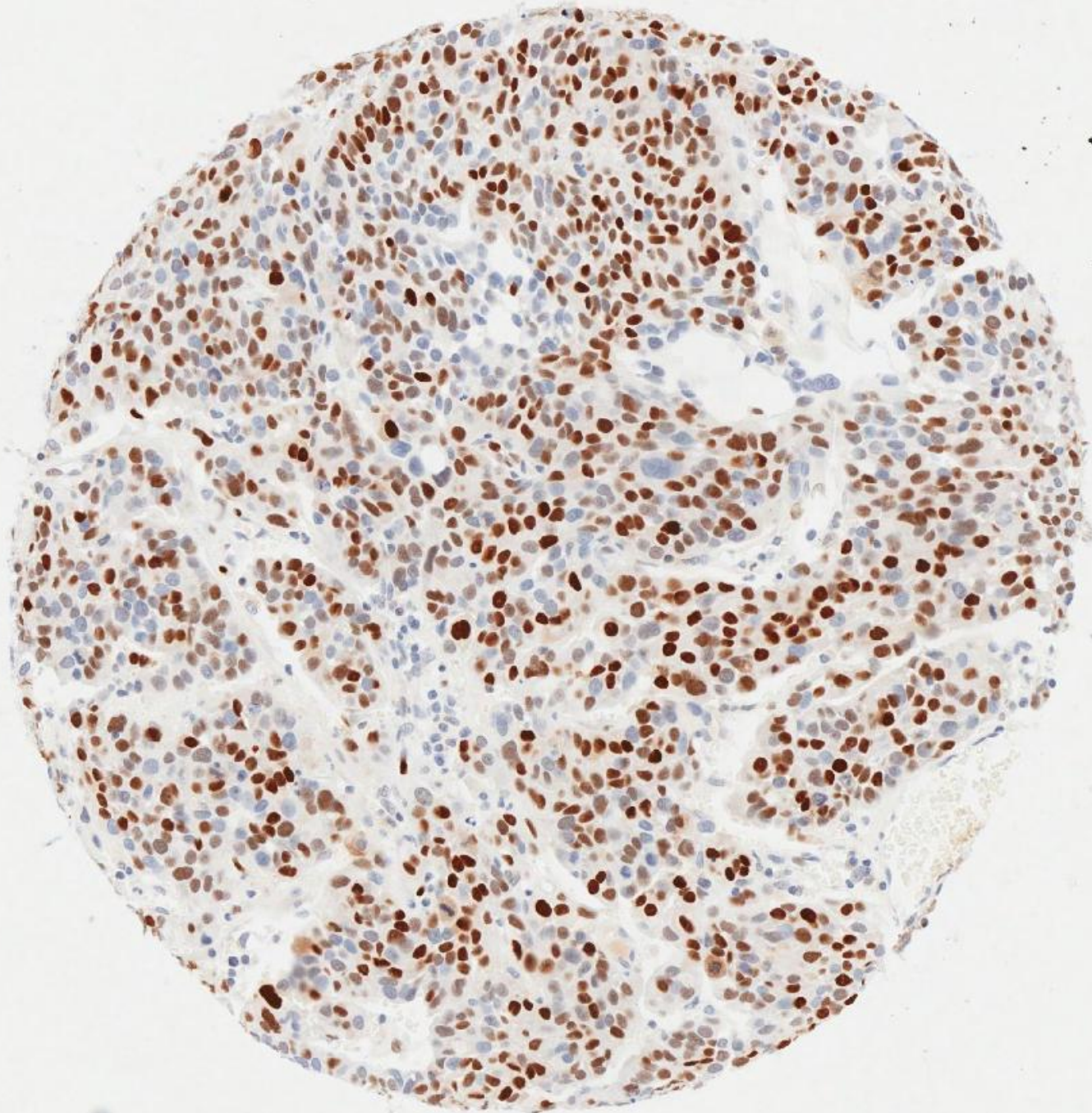




"To harness the collective force of the public to significantly accelerate accurate analysis of our scientific data and help bring forward the day when all cancers are cured"

THANK YOU
CITIZEN
SCIENTISTS!







A collaboration between



ZOONIVERSE

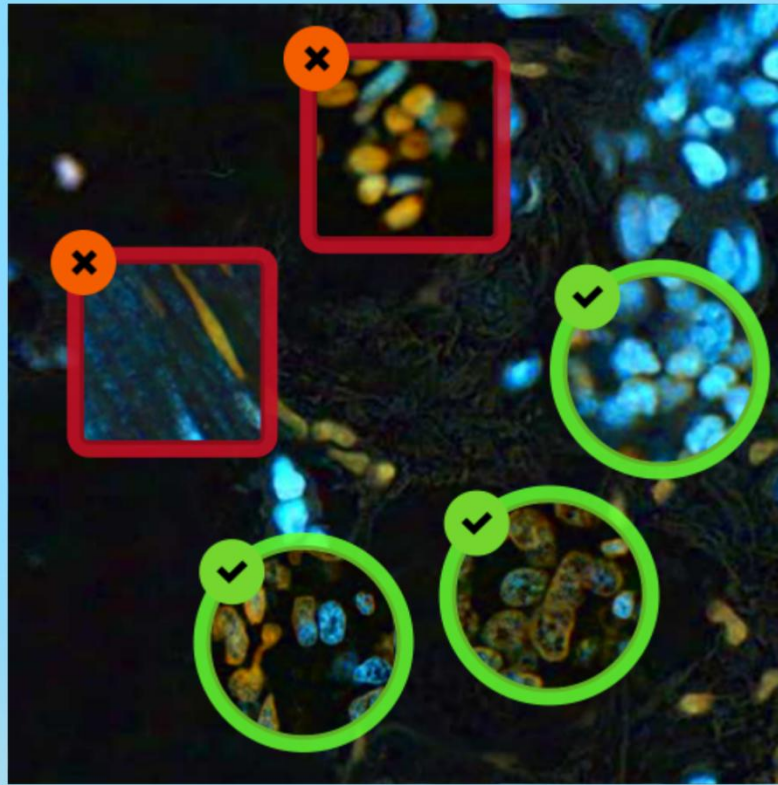
chunk.





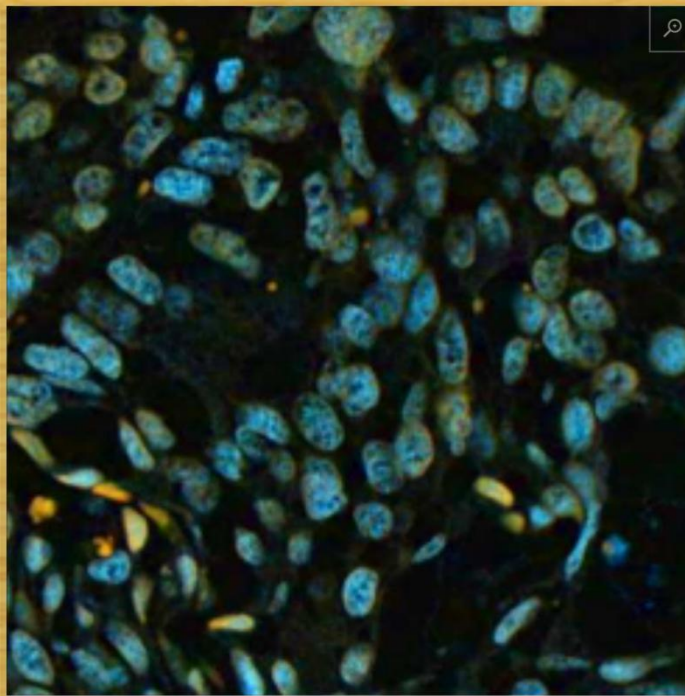
Your Rank
Supporter





The shapes we're looking for are uneven and sometimes speckled, like the ones highlighted in the circles. You can ignore the small, solid shapes or stretched shapes that we've highlighted in red squares. We're not looking for these.





Can you spot any of the shapes we're looking for?

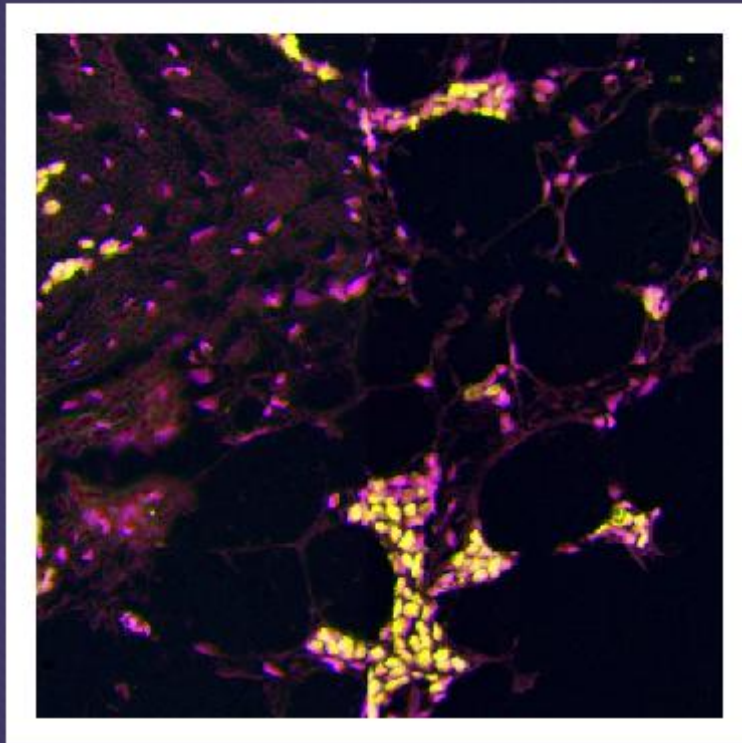


No

Yes

Not Sure

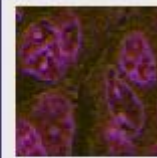




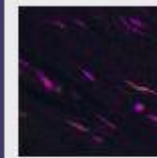
Turn animation off



What types of cell shapes (if any) do you see in this image? Select the types you can see and click done. If you don't see any click none.



Irregular



Tissue



Blood Cells

None



Crowd



Robust
science



Accelerate
research

We will beat cancer sooner

**THANK YOU FOR
LISTENING!**

ANY QUESTIONS?

cruk.org

Rupesh.vyas@cancer.org.uk